



# PRESS FILE



Sens, all  
its Treasures  
Await You

**Tourist Office of Sens and the Senonais region**

6, rue du Général Leclerc - F-89100 Sens • Tel.: +33 (0)3 86 65 19 49

Mail : [contact@tourisme-sens.com](mailto:contact@tourisme-sens.com) • [www.tourisme-sens.com](http://www.tourisme-sens.com)

2021



Y

3



The treasures of Sens through the ages

R

6



The treasures of a forgotten cathedral

8



The great and small treasures of the Museum of Sens

A

11



Treasures of Villeneuve-sur-Yonne

12



Floral treasures

M

14



Treasures of skill

M

15



Treasures for families

16



Gourmet treasures

U

20



Let's party !

S

23

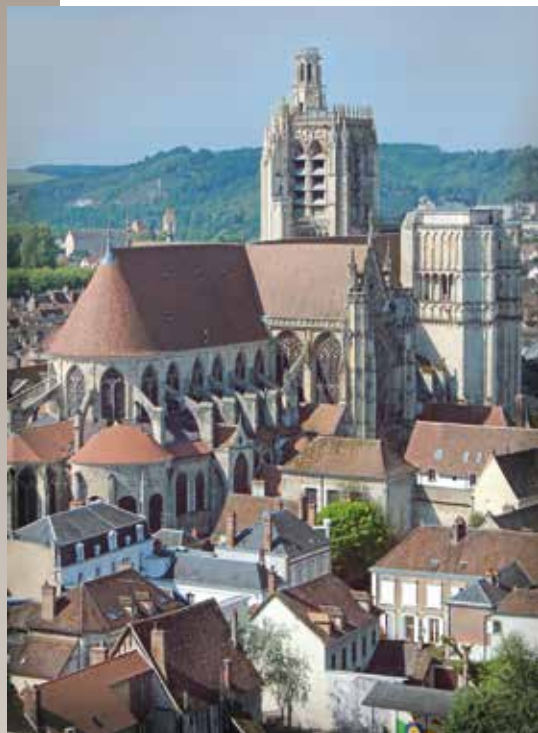


How to get to Sens





# The treasures of Sens through the ages



## ● *Follow the signs!*

Since spring 2017, a heritage trail has been marked out in the historic heart of Sens, materialized on the ground by 300 bronze plaques bearing the effigy of Brennus, chieftain of the ancient Senon tribe and an illustrious local forebear. Brennus is remembered for having conquered Rome in 386 BC, hence his daunting warrior profile. This self-guided walking tour (an itinerary of about 2.5 km or an hour's walk) proposed by the tourist office not only lets tourists discover the treasures of Sens and appreciate the city's remarkable monuments at their own pace, but also enables them to explore its picturesque streets, hidden gems and livelier spots. A booklet describing the trail, with 56 points of interest, is on sale at the tourist office (€1.5). Available in French, English and German.



**The city** owes its name to the Gallic tribe, known as the Senones, who entered into history by seizing Rome, around 390 BC under the leadership of Brennus. It was the ancient "Agedincum" where Caesar stayed with his legions...

**Sens** became a flourishing Gallo-Roman city that was surrounded by imposing city walls after the 3rd century invasions.

**The Imperial Capital** of the "Grande Sénonie" remained until the Middle Ages the metropolis of a vast ecclesiastical province, including the dioceses of Chartres, Auxerre, Meaux, Paris, Orléans, Nevers and Troyes. The Archbishop of Sens bears, to this day, the title of "Primate of the Gauls and of Germany", which means for the Catholic Church, the first prelate after the Pope. The 12th and 13th centuries were a glorious period, with the construction of the cathedral, the Council of Sens with the confrontation of Saint Bernard and Abélard, the stay of Pope Alexandre III, as well as Thomas Becket, and the wedding celebration of Saint Louis and Marguerite of Provence...



**After the ruins left behind the Hundred Years War**, the city rediscovered its splendour during the 16th century, which has left us the legacy of the transept of the cathedral, the Archbishop's Palace, and the House of Abraham...

**But the Religious Wars** and the creation of the Archdiocese of Paris in 1622 was the end of a greater part of the influence of Sens. The city held only Auxerre, Nevers and Troyes under its authority.



**Tourist Office of Sens and the Senonais region**

6, rue du Général Leclerc - F - 89100 Sens • Tel. : + 33 (0)3 86 65 19 49

Mail : [contact@tourisme-sens.com](mailto:contact@tourisme-sens.com) • [www.tourisme-sens.com](http://www.tourisme-sens.com)

**Press officer : Anne Bossuyt**



## The treasures of Sens through the ages (continued)

A certain prosperity returned in the 18th century as evidenced by the construction of many private mansions. The city, where the Dauphin, son of Louis XV and Louis XVI's father was buried, emerged weakened from the French Revolution and The Empire.

Its revival began during the 19th century, with the arrival of the railway. The Third Republic asserted that renewed prosperity with the construction of the covered market and the Theatre, then with the Town Hall...



Between the two world wars, the scale of the 30 April fair confirmed the economic role of the city which, at the confines of Burgundy, Champagne, Ile-de-France and the Orléanais, lies at a major motorway intersection and has become a pleasant city combining the wealth of its heritage with the charm of its parks and gardens ■



### ● *Discover Sens by audio-tour*

The visit in seven steps allows one to discover, in about an hour and a half, the principal monuments and sights of this ancient religious centre, the famous people that have marked its history, and to travel through time and space. The commentaries are available in French on Guidigo App and can be downloaded for free on an I-Phone and on an Android. Audio-guides and tablets may be hired for €6 at the tourist office.



**Tourist Office of Sens and the Senonais region**

6, rue du Général Leclerc - F - 89100 Sens • Tel. : + 33 (0)3 86 65 19 49

Mail : [contact@tourisme-sens.com](mailto:contact@tourisme-sens.com) • [www.tourisme-sens.com](http://www.tourisme-sens.com)

Press officer : Anne Bossuyt





# The treasures of Sens through the ages (continued)

## As seen by famous visitors

### WHAT HE SAID ABOUT SENS

#### ● *Julius Caesar*

(commentaries on the Gallic Wars  
Volume V)

"...the Senones is one of the most powerful Gallic tribes and enjoys amongst them great authority".



### WHAT HE SAID ABOUT SENS

#### ● *Jouvin de Rochefort,*

European traveller

He wrote in 1672: "Sens is located on the Yonne River, a highly navigable river with a lively trade, whose bridge provides communication between the city and its suburbs, which extend along the shore and is home to the boatmen. Its narrow and winding streets are the signs of its antiquity, which does not hinder the fact that it is one of the biggest and most beautiful cities in France which bears the title of an Archbishopric..."

We visited the Metropolitan in the large market. It is devoted to the early martyr, Saint Stephen (Saint Etienne), and is one of the most remarkable in the kingdom..."

We were surprised at the grandeur of the whole church which equals that of Notre Dame of Paris. But I could say that it surpasses it, in that it is better built..."

### WHAT HE SAID ABOUT SENS

#### ● *Herbert de Boseham,*

secretary to Thomas Becket

He stayed in Sens between 1166 and 1170. "We chose, between the residences dependent on the royal domain, the beautiful city of Sens... This city has many advantages, abundant is it, in wheat, wine and oil, surrounded by forests and embellished by beautiful meadows. The springs gush forth, the rivers flow with abundance and the quiet of Autumn brings a bountiful harvest of all fruits of the earth. But we were especially attracted by the character of the people of Sens. To whom, we were even more sensitive than to the amenities of the city, by their cultivated manners and urbanity of their clergy..."



### WHAT HE SAID ABOUT SENS

#### ● *Napoléon*

On March 19th 1815, he crossed Sens with his retinue. He was received with enthusiasm... He saw the "Dauphine Gateway" and asked what the triumphal arch was. Having learned that the gateway was a tribute to the parents of the Bourbons he exclaimed "It's true, I had forgotten that Sens is a city of aristocrats..."



**Tourist Office of Sens and the Senonais region**

6, rue du Général Leclerc - F - 89100 Sens • Tel. : + 33 (0)3 86 65 19 49

Mail : [contact@tourisme-sens.com](mailto:contact@tourisme-sens.com) • [www.tourisme-sens.com](http://www.tourisme-sens.com)

Press officer : Anne Bossuyt



## The treasures of a forgotten cathedral



With its imposing yet elegant **façade** and large square, Saint Stephen's Cathedral, extended by the Archbishops' palace, is an eloquent testimony to the glorious religious past of the city of Sens; its history closely interweaves with that of the kingdom of France and its influence reached to the farthest corners of Christendom.

At the time when Romanesque buildings were still being built everywhere, it was the first cathedral in which a evolutionary design of vaulting was conceived: the ribbed vaulting. The work started around 1130 and ended at the west front towards the end of the 12th century.



Considered as the first - and the mother! - of all the great Gothic cathedrals of France, the cathedral of Sens served as a model to numerous edifices that borrowed greatly from its style: the cathedrals of Reims, Paris, Chartres, Bourges, but also that of Canterbury. At the end of the 15th century, a vast transept, designed by the great Parisian architect Martin Chambiges, was built in the flamboyant Gothic style ■

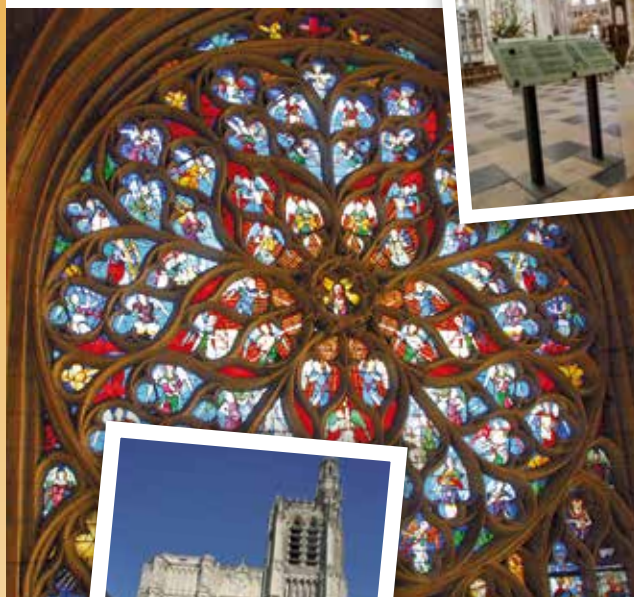






# The treasures of a forgotten cathedral

(continued)



## ● Signage in Sens cathedral

Explicatory panels placed around the cathedral provide the most uninitiated visitor with keys to understanding its features: the story of the cathedral, its main architectural spots, monuments and chapels are presented in a very simple and easily understandable way, including sketches and diagrams stained-glass windows for example). This includes 14 wall signs and 7 stands, all in 3 languages (French, English, German). The panels combine quality and sobriety and integrate seamlessly with the architectural elements. Some have QR codes enabling people to access the audioguided tour of the cathedral on their smartphone.



## ● The stained glass windows: *the teaching of light*

Sens Cathedral preserves a series of stained-glass windows that trace the history of stained glass from the 12th to the 19th centuries. The oldest stained-glass windows (12th century) are on a par in terms of quality and subject matter with those of Chartres or Bourges. The stained glass windows of the transept and especially the two rose-windows of The Last Judgement (south side) and The Heavenly Concert (north side) form an exceptional ensemble, designed between 1500 et 1530, at the very end of the Middle Ages.

*Visitors are advised to bring binoculars to enjoy all their details. The stained-glass windows of the Middle Ages are the equivalent of our comic books of today: they are generally read from bottom to top. The windows of the Renaissance however, are read from top to bottom and are striking with their perspective effects, the richness of their decoration and their attention to detail.*

## ● Visiting the Cathedral

### *Individually*

- A visitor's leaflet is available on request at the tourist office (€0.50).
- Audiotours of the cathedral: 8 stage tour (duration: 1 hour). Rental fee for the audioguides or tablets: €6 at the tourist office or free download of the comments on Guidigo App, available on an Iphone and on an Android.
- Guided tours of the cathedral and its tower, some days, from mid-June to late August.

Full program: [www.tourisme-sens.com](http://www.tourisme-sens.com)

### *With a group*

Bookings on request at the tourist office.

- Classic visits:  
Visit lasts: 1 ½ hours.  
Price: €140 (suppl. Sundays and bank holidays: €28)
- Thematic visits:  
Visit lasts (cathedral + town centre): 2 hours.  
Price : €160 (suppl. Sundays and bank holidays : €28).



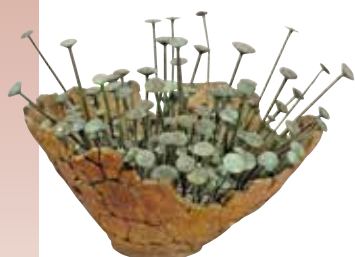
# The great and small treasures of the Museum of Sens



● **The Museum of Sens** constitutes a true "palace-museum". Installed in the magnificent architectural ensemble formed by the adjoining of the cathedral with the 13th century synodal palace and the former archbishops' palace, it houses collections of exceptional interest ■

The Cathedral Treasury is one of the richest in France with that of Saint-Foy-de-Conques, and one of the richest in Europe, containing some famous pieces: enamels, ivories, gold and silverware, liturgical ornaments and vestments (including the recently restored vestment of the Archbishop of Canterbury, Thomas Becket), splendid 15th century Flemish tapestries and extremely rare woven silks ■

**The Gallo-Roman collections** are another key asset of the Museum of Sens, including reconstruction of a thermal baths façade, mosaics, and a unique collection of funerary stelae in France. Found in the 19th century during the dismantling of the wall built after the first barbarian invasions in the 3rd century AC, these blocks and decorative elements were kept in an almost perfect state of preservation and have been protected for centuries from the ravages of time. This collection makes the Museum of Sens a reference in the Gallo-Roman world, on the same standing as the museum of Saint-Romain-en-Gal, in the département of the Rhône, the museum of Lyon or even that of Metz, in the Moselle ■



**Prehistoric and proto-historic** collections are regularly enriched by rescue archaeology. The treasure of Villethierry, from the Bronze Age (1000 BC) with 867 bronze objects (pins, fibulae, rings and necklaces,...) is considered to be an exceptional piece in the world of archaeology.

The visit is completed by the Marrey collection. This remarkable collection includes works by Brueghel, Boudin, Watteau de Lille, around 80 works of Flemish paintings as well as landscapes from the 19th century. Together with two Rodin sculptures, a set of furniture is displayed, made by Raymond Subes, and also some ceramics by Mayodon ■







## The great and small treasures of the Museum of Sens (continued)

### ● Opening of a room dedicated to Napoleon at the Museums of Sens

On the occasion of the bicentenary of Napoleon's death the Museums of Sens have opened a section dedicated to the last six years of the emperor's life. A collection of Napoleonic souvenirs is on exhibit, including the emblematic bicorn worn at Waterloo in 1815. It was damaged by the rain; Napoleon had given it to his hatters Poupart and Delaunay in Paris. Because of his exile to St. Helena, Napoleon never got his hat back. It was a descendant of the Delaunay family who inherited it and donated it to General Duchesne, a native of Sens. It was at his death that the hat was bequeathed to the museum of Sens.

Another major piece is on exhibit in the Napoleon room. It is the costume of a hunter of the guard that the emperor wore on St. Helena. Louis-Etienne Saint-Denis, known as the Mameluke Ali, one of his last followers, inherited it. Living in Sens, he donated it to the city.

These masterpieces, restored by the Fondation Napoleon, are accompanied by engravings, books and small unusual objects (such as the fragment of the willow tree that grew on Napoleon's tomb...). A permanent exhibition that allows visitors to better understand the links between the emperor and the city of Sens, but also to take a closer look at his last years of existence and the constitution of the Napoleonic legend.

At the same time, the city has joined the "Imperial Cities" label. Thanks to this label, Sens is now part of a network of French cities that justify by their history and heritage strong links with the First and Second Empire ■



### ● Museum visits

■ Visits : Mondays, Thursdays, Fridays from 2pm to 6.30pm ; Wednesdays, Saturdays, Sundays and public holidays from 10am to 12.30pm and from 2pm to 6.30pm.

Closure on Tuesdays and on the following public holidays : 1st of January, 1st of May, 14th of July, 11th of November and 25th of December.

■ Prices : full price : €6; reduced price and groups of min. 10 : €4; free until 17 years old ; free temporary exhibitions in the Orangery and Synodal Palace.

■ Further information : Musées de Sens • Place de la cathédrale • Sens • + 33 / (0)3 86 64 46 22

[contact@cerep-musees-sens.net](mailto:contact@cerep-musees-sens.net)



# The great and small treasures of the Museum of Sens (continued)



- **The Orangerie and the Synodal Palace** regularly host temporary exhibitions, particularly of contemporary art. The Museum of Sens also offers lectures and other activities ■



## ● Lunchtime at the Museum

Thematic tours (concerning Napoleon or the temporary exhibitions) are organized during the lunch break to discover the heritage of Sens. Visits on reservation limited to 10 or 15 people.

**Program available on request.**



## ● The cast workshop *at the Museum*



The Museum of Sens is one of the only three museums in France to possess a cast workshop, alongside the Louvre in Paris and the Musée des Beaux-Arts in Besançon. Founded in 1986, it has contributed to the dissemination of knowledge about the heritage of

Senonais. All the steps of moulding, from the cast to the patina are performed by three specialists who practice this art respecting the Charter of Moulding established by the ACEM (the association for Knowledge and Evolution of Moulding). The workshop makes casts from the collection of the Museum of Sens (more than 100 casts from prehistory to the 19th century) for the shop, but also produces works by request for institutions or individuals.

■ Contact : CEREP • 5, rue Rigault • Sens • Tel. 03 86 83 88 90



## ● Nocturnes of the Museums

For this summer 2021, it will be possible to discover collections (archaeological, fine arts, or the Cathedral's Treasure) and exhibitions until 9pm!

**The entrance fee is the same as for the Museums and the program is available on request.**





# Treasures of Villeneuve-sur-Yonne



This small town of 5,400 inhabitants, located about fifteen kilometres south of Sens on the banks of the Yonne river, has great character and charm. Nestling in a bucolic setting of rolling green hills, Villeneuve clusters around the high silhouette of its church of Notre-Dame. This is what Kristin Scott Thomas, the famous English actress who discovered the region some thirty years ago thanks to... a car breakdown, said in *Le Figaro Madame* in March 2016: "A fortified village once very popular with painters, where time has stood still! I love the medieval part, and among its rows of little houses, there is a pink one, a tiny old hairdressing salon that I would love to turn into a bed & breakfast!"

It was Louis VII (the great-grandfather of Saint-Louis) who founded the town in 1163. It marked the boundary of the royal domains on the right banks of the Yonne river. This new town served as a sort of advanced bastion of the city of Sens facing Champagne, but its foundation also coincided with the 12th century blossoming of the French provinces. Due to a particularly advantageous legal status for its inhabitants, Villeneuve's population flourished and the town took shape over a period of about fifty years. It was a sort of boom town of its era!



## ■ *Our advice:*

To find out more and follow the best route to visit the town, a discovery map can be obtained from the Tourist Information Office, next to the Porte de Joigny. You can also rent a tablet at the Tourist Information Office (€6) or download the application "Villeneuve-sur-Yonne: its charm and character" on Guidigo App, available on an I-Phone and on an Android.

■ *Tip:* every 3rd Saturday of the month, you can take part in the work on the vines, with the Clos de Crève-Coeur association on its Vaufourche plot, near Beaudemont, on the heights of Villeneuve (breathtaking view!).

Of the two km of defensive ramparts, with their glacis, wide ditch and walls flanked by numerous towers and five gateways, two gateways still remain today – the Porte de Sens and the Porte de Joigny – complete with embrasures, arrow slits and portcullis grooves... And the green belt of the promenades marks where those ancient ramparts once stood. In Villeneuve, one is immediately attracted to the river, and this is no coincidence. From the 16th to the 19th centuries, its port comprised a vast warehouse for wood and charcoal destined for Paris. Wine and leather completed this wealthy trade to which we owe the finest of the great buildings in the city centre – rue Carnot, in particular – between the "low streets" of the bargemen and the "high streets" of the winegrowers ■



**Tourist Office of Sens and the Senonais region**

6, rue du Général Leclerc - F - 89100 Sens • Tel. : + 33 (0)3 86 65 19 49

Mail : [contact@tourisme-sens.com](mailto:contact@tourisme-sens.com) • [www.tourisme-sens.com](http://www.tourisme-sens.com)

Press officer : Anne Bossuyt



## Floral treasures

In Sens, a "town in bloom" and the recipient of "4 flowers" for more than 20 years, we plant, we take cuttings, we create new breeds... The park department works to maintain more than 900 trees, roundabouts, kiosks, bridges and flower beds every year.



### The Musts

#### ● The Tan Mill Park

A huge island of greenery of more than 37 acres, located between the outskirts of the city and the countryside, this magnificent park is built around an old tannery. It is one of the most visited parks in Burgundy with more than 200,000 visitors annually. This comprises an arboretum, a rose garden, a mini-farm with its animal pens for family enjoyment and a wildlife observation area. Not forgetting a children's play area, a fitness trail and some picnic areas. A small stream runs through the park where waterfowl frolic to the delight of children and adults ■

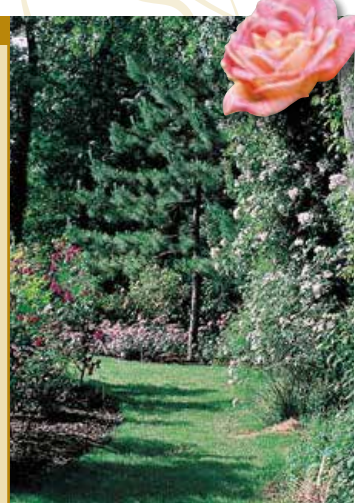
The tropical greenhouses are the highlight of the walk, with a display of 600 m<sup>2</sup>. The entire collection of tropical plants, which has been collected since 1970, is exhibited. There are nearly 1,500 species and varieties, which have been acquired through donations or exchanges with other cities or amateur collectors. The visitor may first discover the Mexican garden, and the cactus greenhouse, followed by the epiphytes greenhouse and finally the "winter garden" which reproduces a climate very close to that of the rainforest. In the pool, between the giant banana tree and the sensitive plant, is the astonishing "Victoria Cruziana", a giant aquatic plant native to the Amazon. It is the glory of the collection

■ Contact : **Department Parks City of Sens**  
110, rue du Général Dubois • Sens • Tel. : 03 86 95 38 72



#### ● The "Remarkable garden" label

Le parc du Moulin à Tan s'est vu attribuer par la Direction Régionale des The Tan Mill Park was awarded this label in 2011, by the Regional Direction of Cultural Affairs, making this green space of the city the only city park in the department of Yonne to receive this award. The other two holders of the "Remarkable garden" label in the Yonne department are private gardens : the one at the Thorigny-sur-Oreuse château, also in the Sens area, and the Jardin de la Borde in Leugny. A rare distinction for gardens and parks, this network counts among its members about a dozen parks and gardens in Burgundy, including the garden in the abbey of Fontenay and the vegetable garden in the Sully castle. Almost all the gardens and parks are private, so it is a real recognition and a source of pride for the city of Sens and its parks department.



**Tourist Office of Sens and the Senonais region**

6, rue du Général Leclerc - F - 89100 Sens • Tel. : + 33 (0)3 86 65 19 49

Mail : [contact@tourisme-sens.com](mailto:contact@tourisme-sens.com) • [www.tourisme-sens.com](http://www.tourisme-sens.com)

Press officer : Anne Bossuyt





## Floral treasures (continued)

### Other parks and gardens of Sens and the Senonais



#### ● The Orangery garden

Nestled in the apse of the cathedral and the archbishops' palace, this magnificent French garden is the heir to the former archbishop's private garden. It faithfully reproduces the earlier garden of the 19th century and provides a welcome green space at the heart of the town. It regularly hosts sculptures and installations as part of the temporary exhibitions at the Orangery (Museum of Sens). The garden changes through the seasons with alternating themes: medicinal plants, ornamental vegetables, orangery plants and old rose bushes and it changes appearance each year...

#### ● The "Champs Captants" Park

(Water Harnessing Fields)

This park, along the banks of the river Yonne, is perfect for enjoying several activities: walking, jogging or cycling on a circular trail of 2.3 miles, and golf on a course of 26 holes with putting greens and bunkers. An original discovery to make too: a small conservation vineyard with grape varieties from the Senonais area ■

#### ● The "Ballastière" Park (at Saint-Clément)

This wilder park offers nature lovers the chance to stroll beside a pond and the opportunity to observe the birds, herons, ducks and moorhens that also benefit greatly from this spot ■



#### ● The "Lavandières" Park (at Maillot, rue de Sens)

Enclosed by the waters of the Vanne river, which divides into two branches, this prettily flowered small park of 2.3 acres is a pleasant place to stroll. It has its old restored wash house and a shaded picnic spot ■





## Treasures of skill

Numerous master craftsmen are based in Sens and the Senonais region: violin-making, bronze art, restoration of paintings, jewelerymaking and creation of ladies' clothing, as well as casting and leatherworking, are amongst the long list of skills held by artisans possessing invaluable know-how ■

### ● Violinmaking: a family history *Florentin Perrin*

4, rue Paul Bert • 89100 Sens • 03 86 83 30 15

With the Perrins, violin making is a family affair. Florentin, 38, continues in the footsteps of his father, François, who taught Florentin since he was 5, his passion for this profession. At that time he wasn't allowed to touch the tools and instruments of the trade, but once he was allowed to, he learned fast!



They are among the thousand luthiers currently working in France. Unlike his father, who learned at Mirecourt, in the Vosges, Florentin learned the basics of his profession in Italy, at the International School Antonio Stradivari of Cremona. The rest, his father taught him in his Parisian workshop. Of very different temperaments – Florentin is as reserved as his father is voluble – they continue to work together in their small workshop, now it's the father who backs up his son. But the two still make a pair!







## Treasures for families

### ● *Fun and friendly, the mini playbooks*

Thanks to this series of three booklets-games, designed in the form of discovery rallies, dedicated respectively to Antiquity, the Middle Ages, and parks and gardens, children from 6 to 11 years old will be able to discover Sens and its region, with their parents, while having fun. Once the riddles are solved, the children are invited to return to the tourist office where they will receive a reward. These discovery booklets, sold for €2.80 at the tourist office are labeled Famil'Yonne. All year long. ■

■ **Tourist Office of Sens and the Senonais region** • 6, rue du Général Leclerc • 89100 Sens • Tel. : 03 86 65 19 49 • [www.tourisme-sens.com](http://www.tourisme-sens.com)



### ● *Fun and interactive tours for children ages 6 to 13*



Five smartphone applications "Culture Investigations" are offered to children from 6 to 13 years old. They can be downloaded from Guidigo or rented on tablets in the two information offices of the Tourist Office of Sens and Senonais, in Sens and Villeneuve-sur-Yonne. They combine text, images, audio commentary, virtual objects and games. During these interactive treasure hunts, children from 6 to 13 years old must solve about twenty riddles that will allow them to collect clues throughout their tour. Their mission is to solve the final riddle. Five themes: "A walk with Etienne", "In the footsteps of the French Michelangelo", "In search of Mother Michel's cat" and "It's all coming together" for Sens and "Go back in time to free the princess" for Villeneuve-sur-Yonne. These applications are free. More information on [www.tourisme-sens.com](http://www.tourisme-sens.com)

• **Possibility to rent a tablet : €6.**

### ● *Labyrinthine, this labyrinth...* *La Ferme des Glaciers*

Come and spend a unique moment with your family in the heart of a giant corn maze, solve its riddles, take a walk in a rosalia in the middle of the farm animals, play with about fifty giant old games, discover a yurt... Such is the program proposed by this educational farm for the summer period. A change of scenery is guaranteed for young and old... The structure is, moreover, open all year round for the discovery of animals, cultivation techniques, for workshops or birthday parties ■

■ **La Ferme des Glaciers** (2.2 miles from Sens)  
89100 Saint-Martin-du-Tertre • Tel. : 03 86 64 38 24  
<http://fermedesglaciers.jimdo.com>



**Tourist Office of Sens and the Senonais region**

6, rue du Général Leclerc - F - 89100 Sens • Tel. : + 33 (0)3 86 65 19 49

Mail : [contact@tourisme-sens.com](mailto:contact@tourisme-sens.com) • [www.tourisme-sens.com](http://www.tourisme-sens.com)

Press officer : Anne Bossuyt



## Gourmet treasures

### ● Recommended tables

When it comes to cuisine and gastronomy, Sens, gateway to Burgundy, has nothing to envy the more Southern destinations in the region. Here, the city's name rhymes with the delight of the senses and taste buds... And the sin of gourmandise has no place here to be cited. In fact, Sens and its region count nearly a dozen restaurants which are cited in gastronomic or tourist guides. Topping the list is a restaurant that has been part of the prestigious Michelin guide since 1999, crowned by one star ■



List of restaurants recommended by gastronomic and tourist guides:

- **La Madeleine** - Ile d'Yonne  
Quai Boffrand à Sens - Tel. 03 86 65 09 31
- **Le Clos des Jacobins**  
49, Grande Rue à Sens - Tel. 03 86 95 29 70
- **Le Crieur de Vin** - 1, rue  
d'Alsace-Lorraine à Sens - Tel. 03 86 65 92 80
- **Monette**  
75, Grande Rue à Sens - Tel. 03 86 88 43 51
- **La Lucarne aux Chouettes**  
Quai Bretoche à Villeneuve-sur-Yonne  
Tel. 03 86 87 18 26

### ● Specialties to taste (without moderation)

#### ■ *The Brennus candy*

Pâtisserie Gaufillier  
53, rue de la République - 89100 Sens  
Tel.: +33/(0)3 86 65 12 99



#### ■ *The Bûchette Sénonnaise candy*

Maurice Hu  
2, place de la République - 89100 Sens  
Tel.: +33/(0)3 86 86 89 88

#### ■ *Cakes Le Pavé Sénon and Le Sénon*

Bakery Thierry Jugé  
2, avenue Vauban - 89100 Sens  
Tel.: +33/(0)3 86 65 11 20

### ● Regional products that know no borders

Snails, Dijon mustard, blackcurrants, parsleyed ham, cheese gougères and the traditional specialities of Burgundy figure prominently on the map of the fine restaurants of Sens and the Senonais region. Not including the fact that Sens borders on three other regions: Champagne, the Paris region, and the region of the Centre & Loire Valley. Here the sausage can be from Chablis or Troyes, the wines from the Yonne or the Champagne, the cheese from Chaource or Soumaintrain, the honey from the Yonne or the Gâtinais, the apple juice and cider from the Othe. And a pinch of Gâtinais saffron can also flavour the dishes ■

### ● A few nice markets

- *Sens*: Monday and Friday mornings
- *Pont-sur-Yonne*:  
Wednesday and Sunday mornings
- *Villeneuve-sur-Yonne*:  
Tuesday and Friday mornings



**Tourist Office of Sens and the Senonais region**

6, rue du Général Leclerc - F - 89100 Sens • Tel. : + 33 (0)3 86 65 19 49

Mail : [contact@tourisme-sens.com](mailto:contact@tourisme-sens.com) • [www.tourisme-sens.com](http://www.tourisme-sens.com)

Press officer : Anne Bossuyt





## Gourmet treasures (continued)

### Places to discover

#### ● Craft Brewery Larché

The brewery of Sens was founded in 1996, an idea of three friends who wanted to revive the old tradition of the city of Sens. The Brewery has been making and selling white, blond, brown and amber beers, as well as other seasonal brands under the label of "Thomas Becket", since 1996. Different malts are produced from Burgundy barleys and the addition of honey from the Yonne adds the final touch to this purely Burgundy product. Aged in barrels, bottle or even stoneware jars, these products have seduced the whole of Burgundy, and are now distributed in the Franche-Comté, the Jura and the Parisian region. From its initial production of 150,000 litres, the brewery, in full expansion, now produces 1,600,000 litres. Its products have obtained recognition from the whole profession. More products have been added to the range since 2017: beers flavoured with cherry, blackcurrant and mirabelle plum and now also the organic and gluten-free Alesia pale ale. Cheers!

Shop open to the public from Monday to Friday from 8.30 am to 12 pm and from 2 pm to 5 pm.

■ **Brasserie Larché** • 89, rue Bellocier • 89100 Sens • Tel. : 03 86 65 19 89  
[www.brasserie-larche.fr](http://www.brasserie-larche.fr)



#### ● La Fromagerie Lincet

Located in the village of Saligny, not far from Sens, the company was established in 1957, and bears the name of five generations of cheesemakers, originally from the Champagne region. The company is ideally situated in the heart of the countryside where cheese traditions have been exchanged across the regions of Champagne, Burgundy and Paris, which is shown by the choice of the range of cheeses produced: Chaource, Brillat Savarin, Soumaintrain and Epoisses. This company of 180 employees produces more than 4,500 tons of cheese per year and comprises 63 producers. The society is resolutely committed to the quality of the products but also to the quality of the working methods and quality control. The factory has its own used water treatment thanks to the impressive washing tunnel of its production tools. ■



■ **Fromagerie Lincet** • 15, rue de la Quenneville • Saligny (3.7 miles from Sens)  
 Tel : 03 86 97 83 97 • [www.fromagerie-lincet.net](http://www.fromagerie-lincet.net)



## Gourmet treasures (continued)

### ● Honey Farm Henry

4.3 miles from Sens in the direction of Troyes, Céline and Julien welcome their visitors at their farm of apiculture and cider, members of the "Welcome to the Farm" network. Up to 7 varieties of honey are available, including the famous Linden tree honey, which has won a gold medal at the General Contest of Agriculture in March 2013 at the French Agricultural Show. They also offer cakes made with honey (meringues, madeleines, spice bread) and honeyed cider ■

Shop open to the public from Monday to Friday, from 9 am to 12 pm, and from 1.30 pm to 5.30 pm

■ **Miellery Henry** • 15, rue des Maisons Brûlées • 89320 Villiers-Louis (15 miles from Sens) • Tel. : 03 86 88 24 23 • [www.mieldelyonne.fr](http://www.mieldelyonne.fr)



**Route du Cidre  
et des Pressoirs**

### ● Apple and Cider Museum

One can discover a very old and astonishing "parrot wheel" cider press, impressive by its size and ingenuity. Exhibition and film on cider production.

Shop open to the public (cider and apple juice of the farm) all year, every day on appointment.

■ **Earl Frottier** • 8, Hameau des Brissots  
89320 Vaudeurs (15 miles from Sens) • Tel. : 03 86 96 25 37  
[www.cidrefrottier.com](http://www.cidrefrottier.com)

### ● The snails of Armeau

This breeding farm of 100,000 gasteropodes, between Sens and Joigny, set up at the beginning of 2009 shows us that the snail of Burgundy (scientific name: *Helix Pomatia*), an endangered species, obeys strict conditions of collection and is very often replaced in our regions by *Helix Aspersa* (small grey or big grey). Imported from North Africa about 30 years ago, it adapted fully to being bred. The visit of the farm (available upon booking) gives you an idea of the whole approach from creation to your plate ■

Shop open to the public on appointment.

■ **Snails of Armeau** • 46, rue de Bourgogne • 89500 Armeau (12.4 miles from Sens) • Tel. : 06 34 49 66 48 • [www.lesescarbios.com](http://www.lesescarbios.com)







## Gourmet treasures (continued)

### Have some cooking lessons

#### ● With Patrick Gauthier at the Madeleine workshop

Two kinds of lessons are available at the moment:

##### ■ *Lessons for adults*

Workshops: every Sunday between 10.30 am and 4.30 pm - Price: €95 per lesson per person

##### ■ *Lessons for children* (from 8 years old)

Workshops: every Wednesday, from 4.00 pm to 6.00 pm - Price: €31 per lesson per child.

Tel. 03 86 65 09 31 • [www.restaurant-lamadeleine.fr](http://www.restaurant-lamadeleine.fr)



#### ● A happy Star Chef: Patrick Gauthier

##### *La Madeleine • Le Crieur de Vin*



A love for Burgundy and its produce, an openness to the world, a fascination for Japan, and an eternal search for subtle combinations of carefully selected products from local markets and even as far as the Rungis market, chosen very early in the morning, a passion, constant questioning and a frenetic rhythm of life and work, but still the same simplicity: this is how Patrick Gauthier and his work can be described in a few words. After working for 10 years in some of the most prestigious restaurants in Paris and France, Patrick Gauthier opened his first restaurant "La Madeleine", in Sens, his hometown, in 1990. He was awarded a Michelin star in 1999, proof of his hard work. Later "Le Crieur de Vin" (local cuisine) opened in 1995, followed by its replica in Nagano, in Japan in 1997.

Since October 2017, the Michelin-starred restaurant La Madeleine has been located at the southern tip of the Yonne island, where its guests enjoy a panoramic and bucolic view over the river ■



# Let's party ! Major dates for 2021/2022

**Sens and its region have been able to maintain a number of festivals rooted tradition that follow the rhythm of the seasons**

## ● The Saint Fiacre Festival

This feast of the patron saint of gardeners is organized annually by the Horticultural Society of Sens, on the second Sunday of September. The day before, flowered barrows and floats are made by various associations, individuals and villages. On Sunday after a mass held in the cathedral which is decorated for the occasion, the festival continues with a flower parade to the Tan Mill Park where a plant fair is held. It's worth the trip!

■ **5th of September 2021**



## ● Unusual, the Donkey Festival!

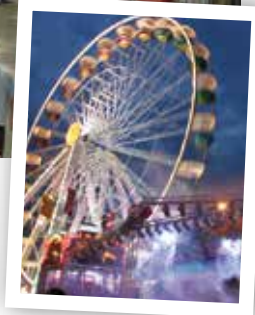
This festival, held every year in Sens in January, is an evocation of the Office of the Feast of Fools, found in a manuscript from the 13th century, kept in the municipal library of Sens. Exhibitions, conferences, carriage rides, activities and workshops in the Museum of Sens, shows for everyone, concerts and theatre are among the activities on offer. An unusual event, not to be missed in the depths of winter!

■ **On January 21st and 22nd, 2022**

## ● The Sens Fair

Every year Sens hosts a major trade show which traditionally takes place just before the 1st of May for a period of 3 to 4 days, in the tradition of the great medieval fairs. It is unusual in that it is held outside on the 1.8 miles of promenades which surround the historic city centre and attracts an average of around 200,000 to 250,000 visitors every year. It's accompanied by a large funfair which stays in the city for two weeks.

■ **1st week-end of May 2022**







# Let's party ! (continued)

## Major dates for 2021/2022

### *To note in your diaries*

- **11 and 12 of June** Grand Senonais Trail
- **From July 1st to August 31st** "Garçon, la note!" music festival
- **From July 2nd to August 28th** "Lumières de Sens" (Lights of Sens)
- **From July 18th to September 5th** Michelle Leclerc International organ festival
- **On September 5th** Saint Fiacre Festival
- **On September 18th and 19th** European Heritage Days
- **From 10th to 12th of December** Christmas market
- **On January 21st and 22nd 2022** Donkey festival
- **1st week-end of may 2022** Sens trade fair



### ● Main annual exhibitions

- **From June 5th to October 10th:** « *Synode - Parler le paysage* » - Synodal Palace in Sens
  - **From June 12th to October 11th:** « *Ulrike Seyboth- Ingo Fröhlich, je dessine le temps, tu peins l'instant* » - Orangery of the Museum of Sens
  - **From November 27th to April 4th, 2022:** « *Dominique D'Acher, Les Chantiers organiques de l'inachevé* »  
Orangery of the Museum of Sens



## Let's party ! (continued)



### ● "Garçon, la note!" music festival

Following Cosne-sur-Loire in 2009 and Dijon in 2010, Sens also adopted in 2011, "Garçon, la note!", a Summer music festival, on the café and restaurant terraces. A registered trademark of the Tourist Office of Auxerre and the Auxerrois region, which celebrates this year the 20th anniversary of the concept. The idea is a partnership between local cafés of the city and surrounding towns, and the tourist office. The festival is held in 2021 in four cities of Burgundy: Auxerre, Dijon, Sens and Châlon-sur-Saône. In 2013, it was exported for the first time outside Burgundy, to Dax (dept. Landes). Free concerts are scheduled some evenings, between 8.30 pm and 11 pm in Sens and surrounding towns, from 1 July to 31 August. The idea is to create a friendly entertainment for residents and visitors alike, regardless of age.

"Garçon, la note!" is characterized by a great diversity of musical styles: French pop, jazz, blues, rock, country, celtic... The underlying aim is also to promote local, regional or even national groups and to support emerging groups. There are many in the Yonne. 50% of the groups are local (in the Burgundy Franche-Comte region), 50% from outside the region. In its ninth year in 2019, the festival attracted about 9,900 people, which means almost 282 for each concert ■







# How to get to Sens

## 1 hour from Paris

### ● By road

#### *From Paris :*

- **75 miles** by the motorways A6 and A5
- **68 miles** by D606 (N6)

#### *From Troyes :*

- **37 miles** by the motorway A5

#### *From Orléans :*

- **90 miles** by the motorways A10 and A19

### ● By train

- **Paris in an hour**
- **Dijon in 2 hours**

### ● Population

- Sens : 26 904 inhabitants  
(sous-préfecture of the Yonne)

### ● Communauté d'agglomération du Grand Sénonais

Armeau, Collemiers, Courtois-sur-Yonne, Dixmont, Etigny, Fontaine-la-Gaillarde, Gron, Les Bordes, Maillot, Malay-le-Grand, Malay-le-Petit, Marsangy, Noé, Paron, Passy, Rosoy, Rousson, Saint-Clément, Saint-Denis-les-Sens, Saint-Martin-du-Tertre, Saligny, Sens, Soucy, Véron, Villeneuve-sur-Yonne, Villiers-Louis, Voisines.



© Graphic creation : Laurence Gentilleau • Crédit photo : Service Communication Ville de Sens, Fotolia, Brasserie Larché, E. Berry – Musées de Sens, S. Lablonde, D. Loth, L. Gentilleau, Office de Tourisme de Sens et du Sénonais, JP Elie – Musées de Sens, L de Cargouët – Musées de Sens, JL Boulard, JM Chamoux – Randyonnées, Communauté d'agglomération du Grand Sénonais, Marie-George Stavelot, La Ferme des Glaciers, Fromagerie Lincet, Henry Julien, Musée de la Pomme et du Cidre, A. Doire – Bourgogne Tourisme, G. Villa, T. Toinot – CCS, S. Chameroir, La Maison Production.



**Tourist Office of Sens and the Senonais region**

6, rue du Général Leclerc - F - 89100 Sens • Tel. : + 33 (0)3 86 65 19 49

Mail : [contact@tourisme-sens.com](mailto:contact@tourisme-sens.com) • [www.tourisme-sens.com](http://www.tourisme-sens.com)

**Press officer : Anne Bossuyt**